

Statement of Performance

April 18, 2011

Product Description

- **Formula:** Spray-Lock[®] 3100
- **Flooring Material:** Altro/Timbersafe
- **Material Acclimatization:** 48 Hours at 72°F or 22°C
- **Substrate Used:** Concrete

General Adhesive Information

- **Adhesive Working Time:** 3 Hours
(after adhesive no longer transfers to fingers when lightly touched).
- **Adhesive Drying Time:** 15-20 Minutes
(or until no adhesive transfers to fingers when lightly touched).
- **Desired Coverage:** 150-185 sq ft
13.9-17.1 m sq

Spray-Lock[®] is a water-based adhesive containing 0.0 g/ml VOC's. Spray-Lock's[®] instant shear strength allows immediate use of the flooring after application. It can withstand up to 8lbs of moisture vapor emissions or 90% relative humidity and is resistant up to 11pH.

Available in 22oz aerosol cans.

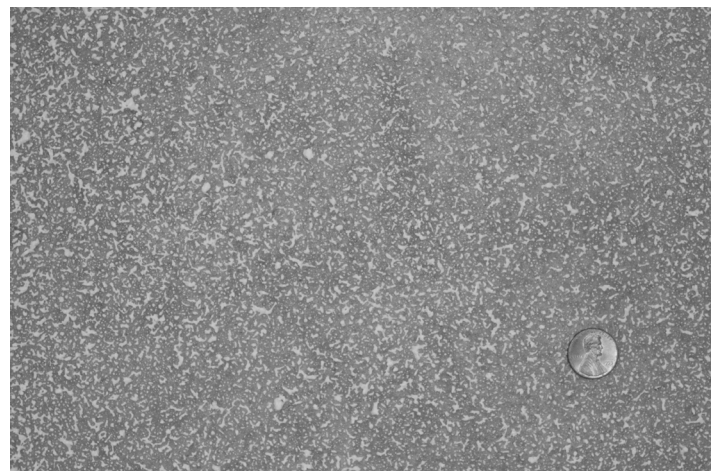
Performance

The test results produced a strong bond with acceptable peel and shear strength. Materials tested are approved for use with our adhesive over acceptable substrates. Spray-Lock[®] does not warrant the dimensional stability of the flooring material regardless of its thickness.

Application Notes

For proper use, follow the instructions supplied with the adhesive or by visiting:
www.spraylock.com

3100 Spray Pattern



- **Desired Spray Pattern**

Image of Material



Approved by

A handwritten signature in black ink, appearing to read "M. Land". The signature is fluid and cursive, written over a white background.

Michael Land
Sr. R&D & Tech Services

This report applies to the specific product as supplied to Interlock for testing at the time of the test. Interlock is not responsible for bond performance changes due to conditions beyond our control such as flooring manufacturing changes, flooring composition changes, flooring profile or finish changes, storage, or applicaiton techniques. Internal Quality control methods were followed unless otherwise noted. This document does not represent a guarantee or promise of performance of the products listed. It only describes testing performed under Interlock's conditions. No warranty is implied. This report shall not be reproduced except in full and with permission from Interlock. Interlock retains sole ownership of the data. Spray-Lock® does not warrant the dimensional stability of the flooring material regardless of its thickness. Spray-Lock® should always be used in accordance with Interlock's issued instructions and procedures consistent with Country specific Standars for floor preparations and installation.

Document version A. January 24, 2012